

LAND CERTIFICATE NO. 55742 COPY

Land Certificate No. 55742 Tulcea

A. Part I. Property description LAND

within the built-up area

Address: Loc. Tulcea, Str Frumoasa, Jud. Tulcea

Item no.	Cadastral number Topographic number	Surface* (sqm)	Observations / References
A1	55742	1,443	Unfenced land;

B. Part II. Owners and documents

Entries regarding property rights and other real rights		References
156286 / 12/12/2023		
Administrative Act no. 328, dated 08/12/2023 issued by the TULCEA LOCAL COUNCIL; Administrative Act no. 17811, dated 11/12/2023 issued by TULCEA TOWN HALL;		
B1	Tabulation, PROPERTY right, acquired by law, current share 1/1, initial share 1/1	A1
1) TULCEA MUNICIPALITY, CIF (Fiscal Identification Code): 4321429, private domain		

C. Part III. ENCUMBRANCES.

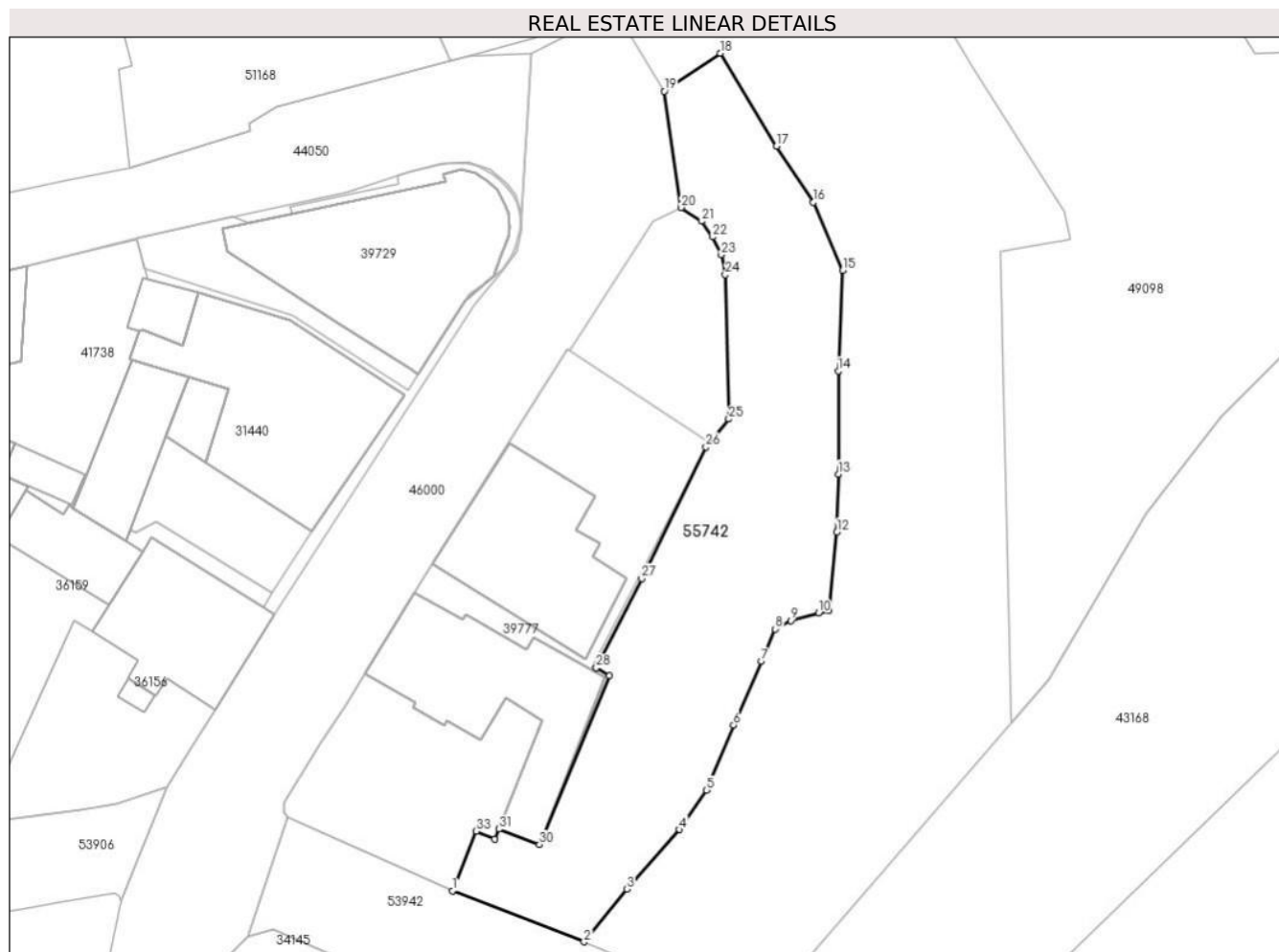
Entries regarding dismemberment of property rights, real rights of guarantee and encumbrances	References
NOT EXISTING	

Annex No. 1 To Part I

Land

Cadastral no.	Surface (sqm)*	Observations / References
55742	1,443	

* The surface is determined in the Stereo 70 projection plane.



Land related data

Item no.	Usage category	Land within the built-up area	Surface (sqm)	Strip land	Lot	Topographical no.	Observations / References
1	construction yards	YES	1,443	-	1	-	Neighboring land with IE 39777 (Casa Armatei) in the back of Bloc D, nr. 4 si Bloc A4, nr. 6

Segments length

1) The segment length values are obtained from the plan projection.

Start point	End point	Segment length (** (m))
1	2	15,647
3	4	8,778
5	6	7,829
7	8	3,916
9	10	3,202
11	12	8,707

Start point	End point	Segment length (** (m))
2	3	7,545
4	5	5,282
6	7	7,686
8	9	1,936
10	11	1,186
12	13	6,441

Start point	End point	Segment length (** (m)
13	14	11,429
15	16	8,235
17	18	12,048
19	20	13,029
21	22	2,125
23	24	2,251
25	26	4.0
27	28	11,086
29	30	20.26
31	32	1,189
33	1	7.11

Start point	End point	Segment length (** (m)
14	15	11,154
16	17	7,426
18	19	7,484
20	21	2,728
22	23	2,213
24	25	16.0
26	27	16,236
28	29	1,684
30	31	4,805
32	33	2,213

** Segment lengths are determined in the Stereo 70 projection plane and are rounded to 1 millimeter.

*** The distance between the points is made up of cumulative segments that are smaller than the value of 1 millimeter.